

HOUSE & LAND PACKAGE IN GREGORY HILLS

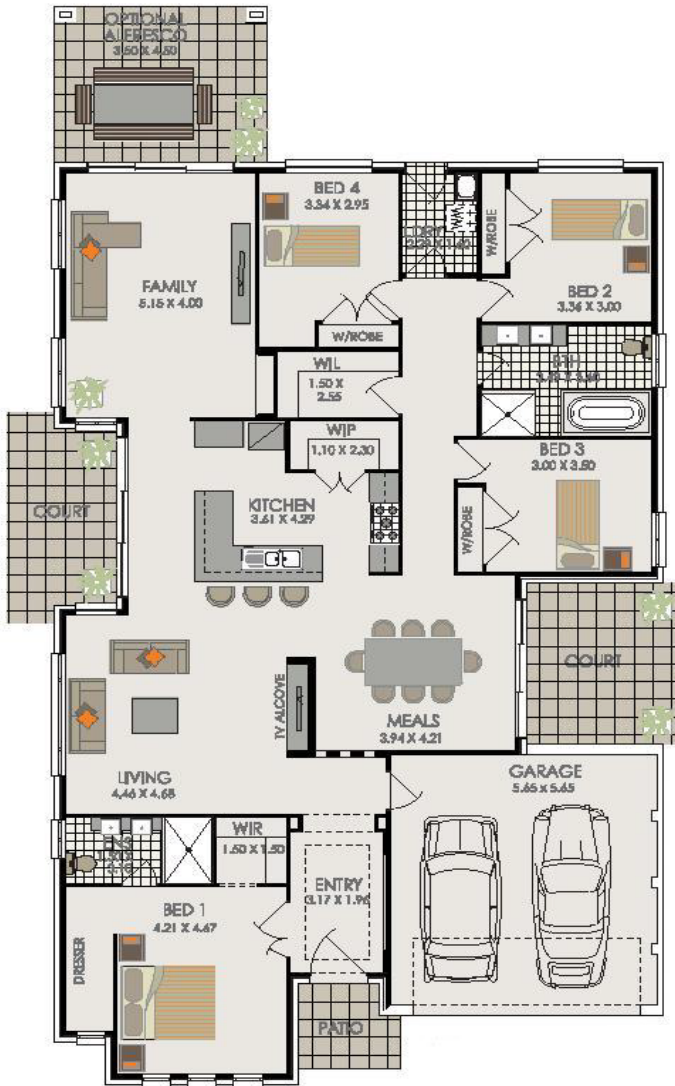


AUSTIN 26

\$242,900 + Land

Key Inclusions:

- Site Costs based on max. 500mm fall over building envelope
- Class 'M' waffle pod concrete slab
- Trevelle 'Classic' inclusions
- Wall & Ceiling insulation
- Tiled front porch
- Ceramic tiling (as per home design)
- Carpets (as per home design)
- Concrete driveway to front boundary
- Custom made kitchen to suit design
- Gas instantaneous HWS
- Recycled water connection
- Alarm system



House Size: 240.35sqm

To suit Minimum 15 metre frontage



www.trevelle.com.au

Display Home: Freemans Ridge- Lot 2104 Graziers Way, Horningsea Park ph. 9608 1443

Head Office: Unit 36/65 Mariold Street. Revesbv ph.9773 8700