

HOUSE & LAND PACKAGE IN FREEMANS RIDGE

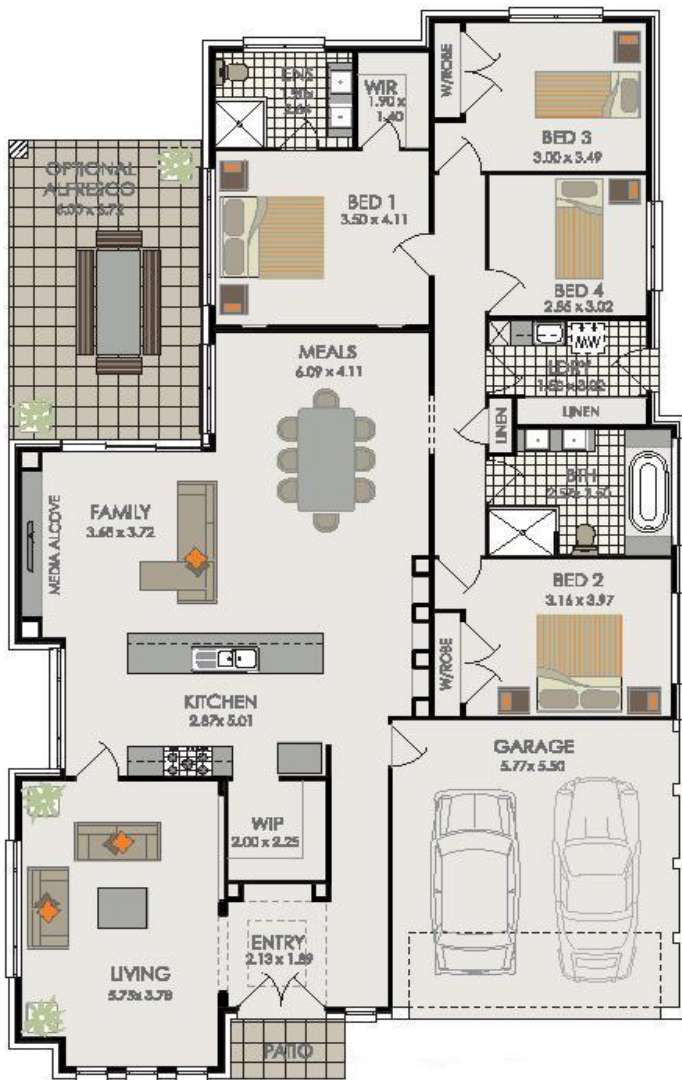


BIANCO 25

\$233,200 + Land

Key Inclusions:

- Site Costs based on max. 500mm fall over building envelope
- Class 'M' waffle pod concrete slab
- Trevelle 'Classic' inclusions
- Wall & Ceiling insulation
- Tiled front porch
- Ceramic tiling (as per home design)
- Carpets (as per home design)
- Concrete driveway to front boundary
- Custom made kitchen to suit design
- Gas instantaneous HWS
- Recycled water connection
- Fibre optic connection to home
- Alarm system



House Size: 229.19sqm * Allbrook façade as shown not included

To suit Minimum 15 metre frontage



www.trevelle.com.au

Display Home: Freemans Ridge- Lot 2104 Graziers Way, Horningsea Park ph. 9608 1443
 Head Office: Unit 36/65 Marigold Street, Revesby ph.9773 8700
info@trevelle.com.au

Trevelle reserves the right to makes alterations to pricing and plans without notice or obligation. Packages are subject to availability and developer design review. All images are for illustrative purposes only and purchasers should make their own enquiries as to facade type and detailed inclusions. Issued 29th April 2010. BL 174564C.