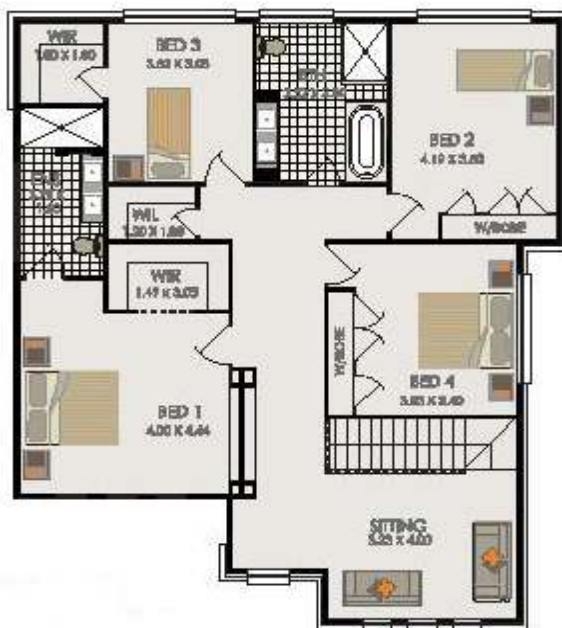




## HOUSE & LAND PACKAGE AT HERITAGE HEIGHTS

### BOMAC 32



## \$309,200 + Land

### Key Inclusions:

- Site Costs based on max. 500mm fall
- Class 'M' waffle pod concrete slab
- Trevelle 'Classic' inclusions
- Wall & Ceiling insulation
- Tiled front porch
- Floor coverings
- Concrete driveway (up to 55sqm)
- Gas instantaneous HWS
- 3000L Rainwater Tank
- Alarm system
- Stainless Steel 'Blanco' appliances
- 25° Roof Pitch



To suit min 15.5 metre wide lot

House Size: 298.45 sqm  
W: 12.95m L: 13.66m

  
Heritage Heights

[www.trevelle.com.au](http://www.trevelle.com.au)

Display Home: Freemans Ridge- Lot 2104 Graziers Way, Horningsea Park ph. 9608 1443  
Head Office: Unit 36/65 Marigold Street, Revesby ph.9773 8700  
info@trevelle.com.au