

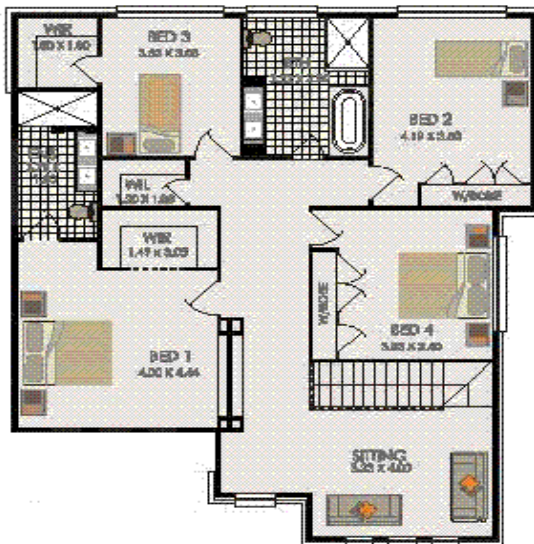
HOUSE & LAND PACKAGE IN GLENMORE RIDGE



BOMAC 32

\$303,200 + Land**Key Inclusions:**

- Site Costs based on max. 500mm fall over building envelope
- Class 'M-H' waffle pod concrete slab
- Trevelle 'Classic' inclusions
- Wall & Ceiling insulation
- Tiled front porch
- Ceramic tiling (as per home design)
- Carpets (as per home design)
- Concrete driveway to front boundary
- Gas instantaneous HWS
- 3000L Rainwater Tank
- Alarm system



House Size: 298.45sqm

To suit Minimum 15 metre frontage

www.trevelle.com.au

Display Home: Freemans Ridge- Lot 2104 Graziers Way, Horningsea Park ph. 9608 1443

Head Office: Unit 36/65 Marigold Street, Revesby ph.9773 8700

info@trevelle.com.au