

## HOUSE &amp; LAND PACKAGE IN BROOKS REACH

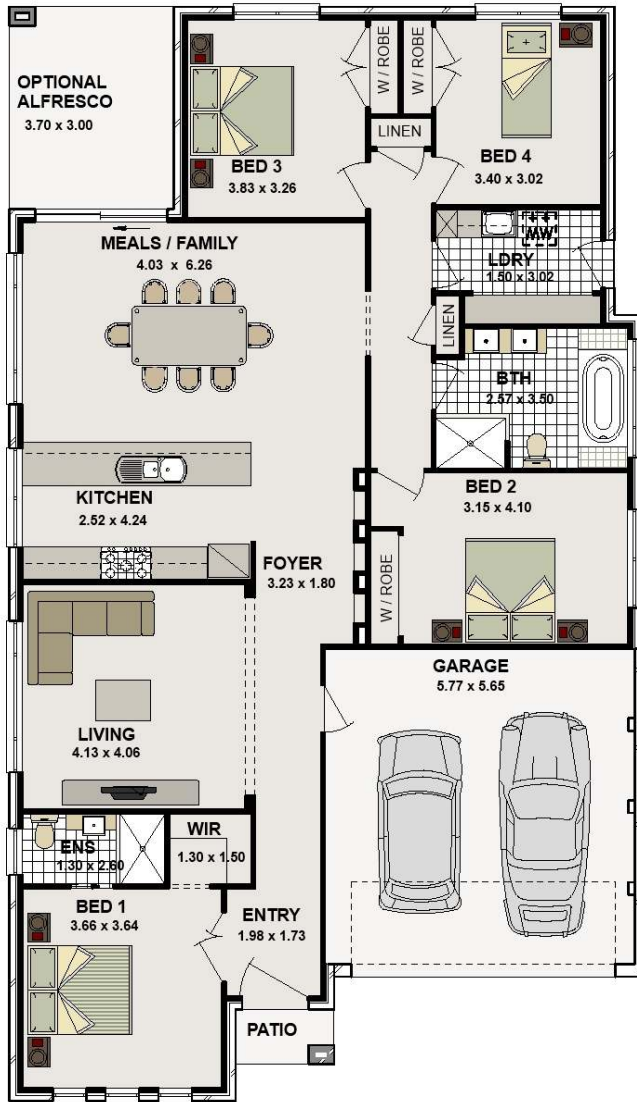


## DYCON 22

# \$225,900 + Land

### Key Inclusions:

- Standard Site Costs (based on max 500mm fall to site)
- Class 'M' waffle pod concrete slab
- Trevelle 'Classic' inclusions
- Wall & Ceiling insulation
- Tiled front porch
- Ceramic tiling (as per home design)
- Carpets (as per home design)
- Concrete driveway
- Gas instantaneous HWS
- 3000L Rainwater Tank
- Alarm system
- Panel lift garage door



House Size: 202.76 sqm

W: 11.51 m

L: 20.03 m

**Brooks  
Reach**  
HORSLEY

[www.trevelle.com.au](http://www.trevelle.com.au)

Display Home: Freemans Ridge- Lot 2104 Graziers Way, Horningsea Park ph. 9608 1443

Head Office: Unit 36/65 Marigold Street, Revesby ph. 9773 8700

[info@trevelle.com.au](mailto:info@trevelle.com.au)