

## HOUSE &amp; LAND PACKAGE IN JORDAN SPRINGS

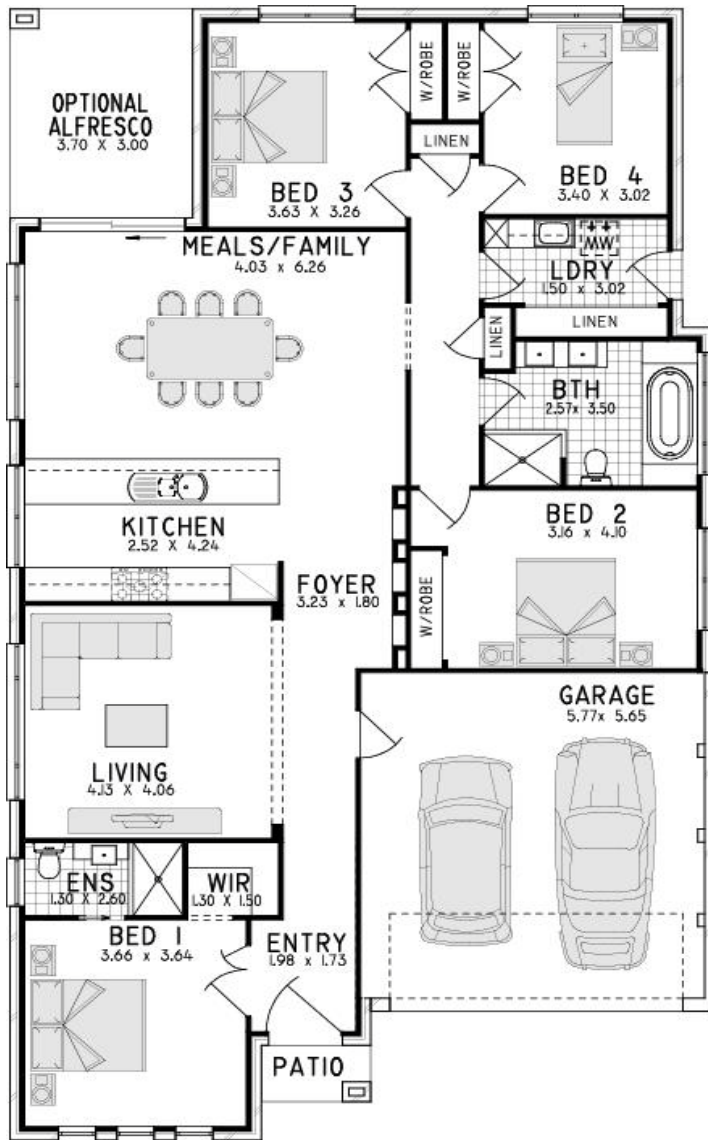


## DYCON 22

# \$231,200 + Land

## Key Inclusions:

- Site Costs based on max. 500mm fall over building envelope
- Class 'M' waffle pod concrete slab
- Trevelle 'Classic' inclusions
- Wall & Ceiling insulation
- Tiled front porch
- Ceramic tiling (as per home design)
- Carpets (as per home design)
- Concrete driveway
- Gas instantaneous HWS
- 3000L Rainwater Tank
- Fibre optic connection to home
- Alarm system



House Size: 202.76sqm \*Brinley façade as shown not included

To suit Courtyard Product

**JORDANSPRINGS**

[www.trevelle.com.au](http://www.trevelle.com.au)

Display Home: Freemans Ridge- Lot 2104 Graziers Way, Horningsea Park ph. 9608 1443

Head Office: Unit 36/65 Marigold Street, Revesby ph.9773 8700

[info@trevelle.com.au](mailto:info@trevelle.com.au)