

HOUSE & LAND PACKAGE IN FREEMANS RIDGE

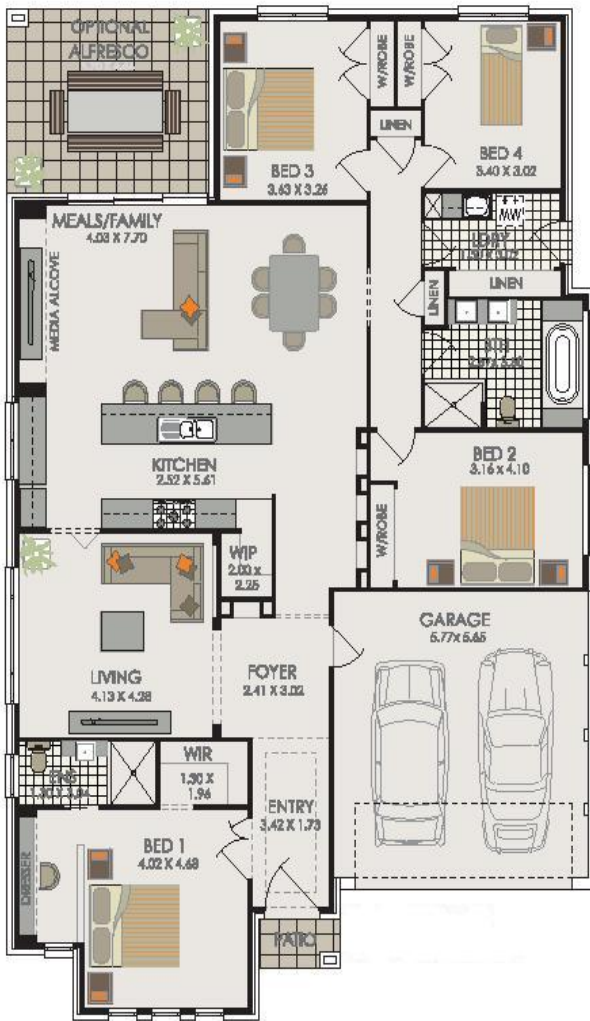


DYCON 24

\$238,200 + Land

Key Inclusions:

- Site Costs based on max. 500mm fall over building envelope
- Class 'M' waffle pod concrete slab
- Trevelle 'Classic' inclusions
- Wall & Ceiling insulation
- Tiled front porch
- Ceramic tiling (as per home design)
- Carpets (as per home design)
- Concrete driveway to front boundary
- Custom made kitchen to suit design
- Gas instantaneous HWS
- Recycled water connection
- Fibre optic connection to home
- Alarm system



House Size: 226.38sqm \*Brinley façade as shown not included

To suit Minimum 15 metre frontage

