

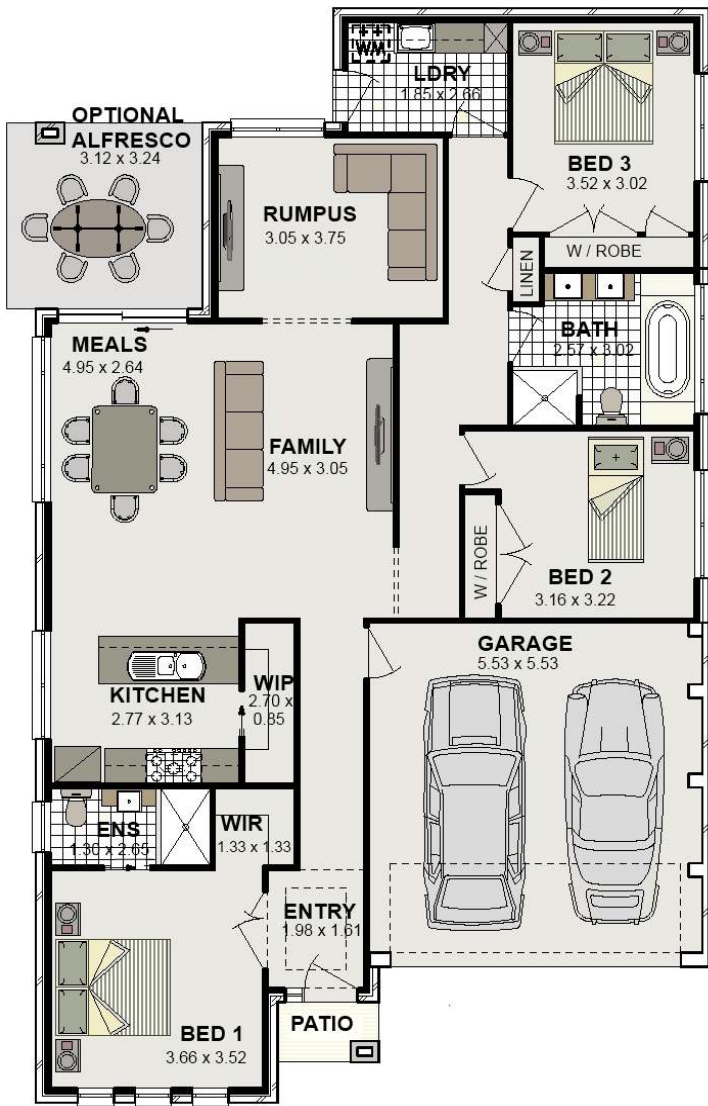
# HOUSE & LAND PACKAGE IN BROOKS REACH

- Lot 208



## FOCUS 19 Mk 3

# \$371,650



### Key Inclusions:

- Standard Site Costs
- Class 'M' waffle pod concrete slab
- \$5,000 Provisional Allowance for BAS requirements
- Trevelle 'Classic' inclusions
- Wall & Ceiling insulation
- Tiled front porch
- Ceramic tiling (as per home design)
- Carpets (as per home design)
- Coloured Concrete driveway (up to 55m<sup>2</sup>)
- Gas instantaneous HWS
- 3000L Rainwater Tank
- Alarm system
- Panel lift Garage Door
- Walk-in- Pantry



House Size: 172.81sqm Land Size: 533sqm

House: \$211,900

Land: \$159,750

[www.trevelle.com.au](http://www.trevelle.com.au)

Display Home: Freemans Ridge- Lot 2104 Graziers Way, Horningsea Park ph. 9608 1443

Head Office: Unit 36/65 Marigold Street, Revesby ph.9773 8700

[info@trevelle.com.au](mailto:info@trevelle.com.au)