




# \$486,900

# HOUSE AND LAND OPTION



## Trevelle Homes

*Our focus is you!*

-  3 BEDROOM
-  2 BATH
-  2 CAR

**DESIGN NAME:** Focus 20

**TOTAL AREA:** 188.25m<sup>2</sup>

**DESIGN PRICE:** \$221,900

### INCLUSIONS

- Stainless steel gas cooktop
- Stainless steel oven & rangehood
- Built in robes to all bedrooms
- Security Alarm System
- 5000L Rainwater Tank
- Driveway (up to 55m<sup>2</sup>)
- Floor Coverings
- Site costs based on standard site

**Contact:** Stacey Megahey

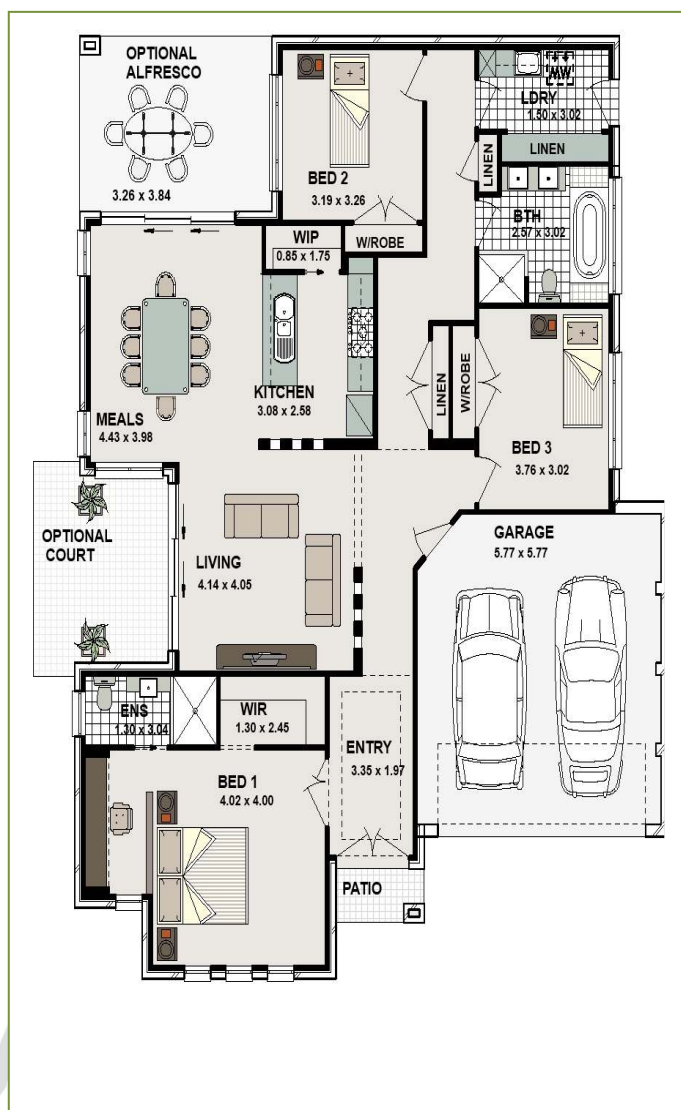
**Phone:** (02) 9608 1443

**MINIMUM LOT SIZE:**

**LOT #:** 102

**LAND AREA:** 578m<sup>2</sup>

**LAND SIZE:** 17m x 34m



[manookavalley.net.au](http://manookavalley.net.au)

t: 1300 667 024

e: [manookavalley@colliers.com](mailto:manookavalley@colliers.com)



Manooka Valley

**Disclaimer:** This document has been prepared by The Seller and Colliers International for advertising and general information only. The Seller and Colliers International does not guarantee, warrant or represent that the information contained in this document is correct. Any interested parties should undertake their own enquiries as to the accuracy of the information. The Seller and Colliers International excludes unequivocally all inferred or implied terms, conditions and warranties arising out of this document and excludes all liability for loss and damage arising there from. Colliers International respects your privacy. A copy of our privacy policy can be obtained by either writing to us at Level 12, 225 George Street, Sydney NSW 2000 or telephoning our Chief Privacy Officer on (02) 9257 0222. Note: Finishes and inclusions are as specified in the inclusions list. In the event of a conflict or discrepancy with any of the construction and/ or marketing information the inclusions list takes precedence. Any furniture or other loose items e.g rugs, chairs, artwork etc depicted in the marketing materials and/or plans are not included and are provided for illustrative purpose only. 008062