

HOUSE & LAND PACKAGE IN JORDAN SPRINGS

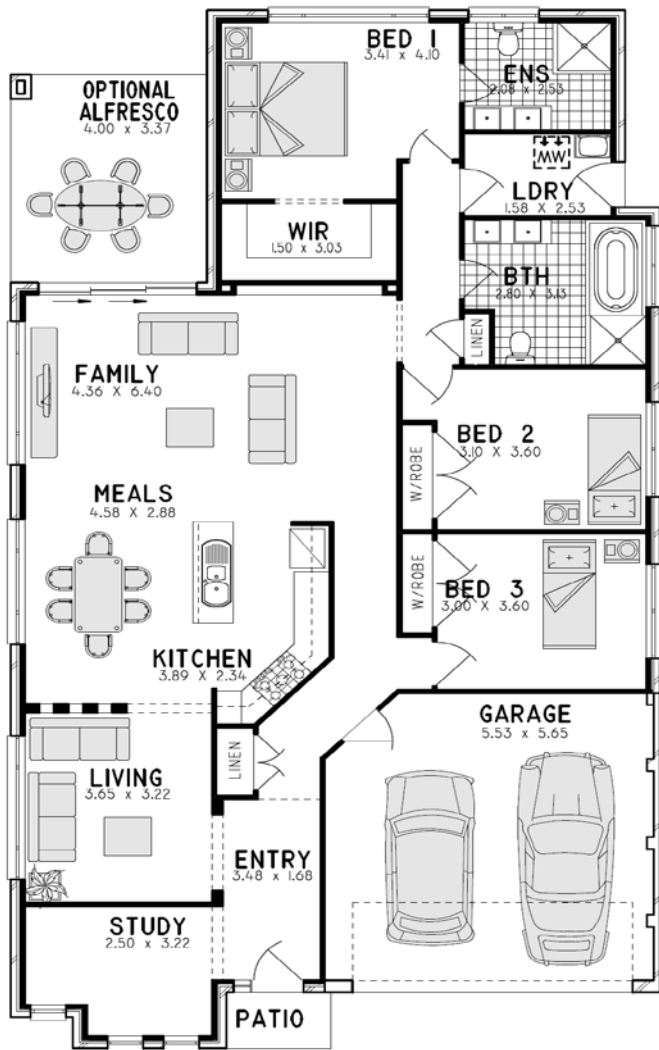


LEYLAND 21

\$226,700 + Land

Key Inclusions:

- Site Costs based on max. 500mm fall over building envelope
- Class 'M' waffle pod concrete slab
- Trevelle 'Classic' inclusions
- Wall & Ceiling insulation
- Tiled front porch
- Ceramic tiling (as per home design)
- Carpets (as per home design)
- Concrete driveway
- Gas instantaneous HWS
- 3000L Rainwater Tank
- Fibre optic connection to home
- Alarm system



House Size: 196.15sqm

To suit Courtyard Product

www.trevelle.com.au

Display Home: Freemans Ridge- Lot 2104 Graziers Way, Horningsea Park ph. 9608 1443

Head Office: Unit 36/65 Marigold Street, Revesby ph.9773 8700

info@trevelle.com.au