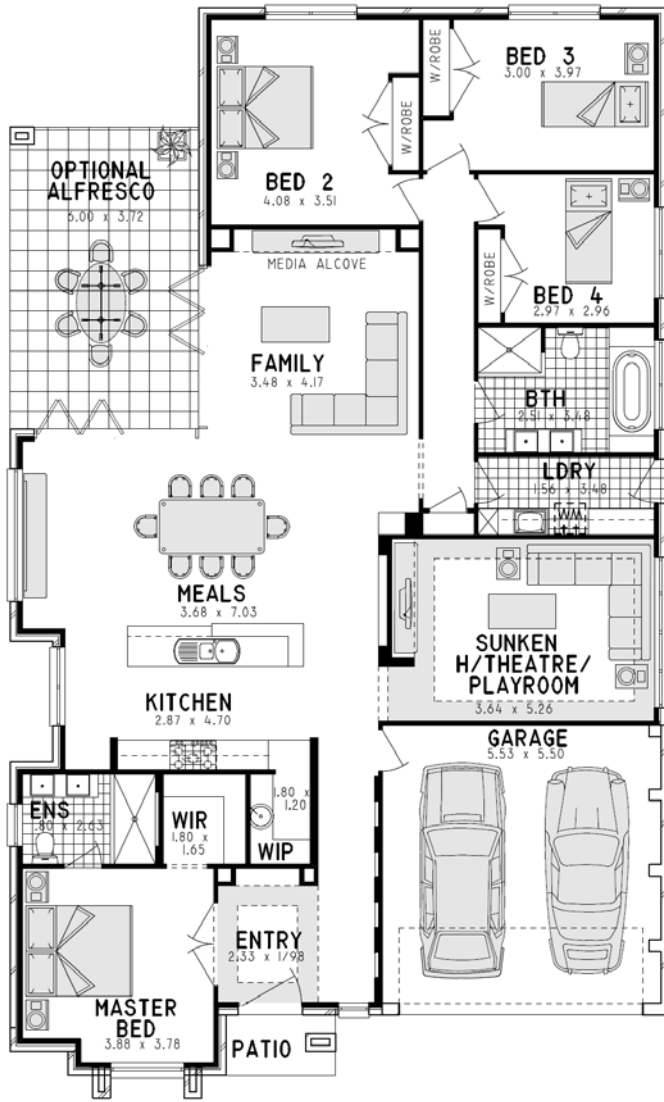


HOUSE & LAND PACKAGE IN ROPES CROSSING



**BIANCO 25 Mk2**

**\$548,300**



**Key Inclusions:**

- Site Costs
- Class 'H' waffle pod concrete slab
- Trevelle 'Classic' inclusions
- Wall & Ceiling insulation
- Tiled front porch
- Ceramic tiling (as per home design)
- Carpets (as per home design)
- Stenciled Concrete driveway
- Gas instantaneous HWS
- Recycled water connection
- Alarm system



House Size: 233.66sqm Land Size: 540.0sqm  
 \$241,500 \$306,800

Lot 2133 Bradley Street, Ropes Crossing

Alfresco + \$9,500  
 R/C Ducted Air Conditioning + \$10,100



[www.trevelle.com.au](http://www.trevelle.com.au)

Display Home: Freemans Ridge- Lot 2104 Graziers Way, Horningsea Park ph. 9608 1443  
 Head Office: Unit 36/65 Marigold Street, Revesby ph.9773 8700  
[info@trevelle.com.au](mailto:info@trevelle.com.au)