

## Lincoln 30 - Traditional Facade

Lot 66 Longhurst Road, Minto

Indicative House & Land Package Price:

# \$525,800<sup>^</sup>

Includes land price of \$170,000<sup>^</sup>

<b>Beds</b>	3
<b>Bathrooms</b>	2.5
<b>Parking</b>	2

### Inclusions<sup>^</sup>:

- Standard site costs<sup>^</sup> based on 'M' slab classification
- Architect designed home to suit the lot
- Driveway
- Floor coverings including tiling to bathroom, ensuite, powder room, laundry, entry, meals, kitchen and family rooms, carpet to remainder of home
- 3,000L rainwater tank
- Gas boosted solar hot water system
- Fencing and landscaping
- Concrete roof tiles from Trevelle's Classic Range
- 'Blanco' stainless steel kitchen appliances
- Trevelle Homes 'Classic' inclusions

### Not included:

- All decor items such as light fittings, downlights, alarm, air conditioning, dishwasher and window coverings
- Any promotional offer currently advertised by Trevelle Homes

## Trevelle Homes

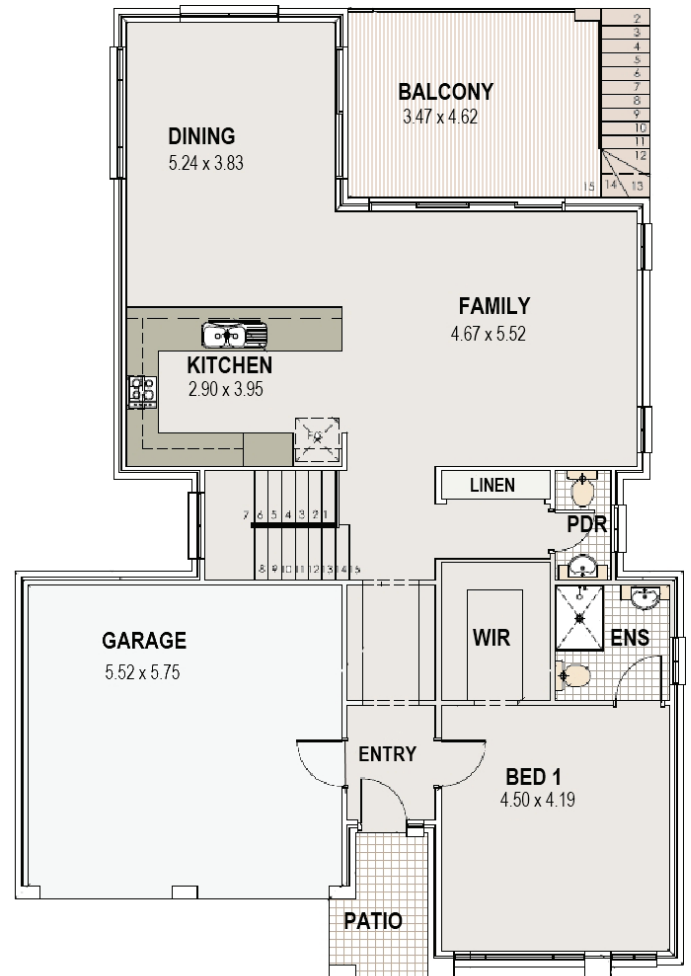
### Further information:

Stacey Megahey  
Phone: 9608 1443  
[www.trevelle.com.au](http://www.trevelle.com.au)

**Sub Floorplan:**



**Ground Floorplan:**



Sub Floor	81.35m <sup>2</sup>
Ground Floor	120.30m <sup>2</sup>
Garage	35.36m <sup>2</sup>
Porch	4.17m <sup>2</sup>

Balcony	1 9.15m <sup>2</sup>
Alfresco	16.03m <sup>2</sup>
<b>Total Area</b>	<b>276.36m<sup>2</sup></b>

## Trevelle Homes

**Further information:**

Stacey Megahey  
 Phone: 9608 1443  
[www.trevelle.com.au](http://www.trevelle.com.au)

\*Conditions apply. See Contract for Sale of Land from Landcom. Homes are available for separate purchase from Trevelle Homes. Refer to separate Building Contract. The information in this flyer has been provided by Trevelle Homes – please refer to builder’s terms and conditions also. Landcom is not liable for any incorrect or misleading information or failure to disclose information whether in connection with this flyer or at any other time. †All drawing and images are for illustrative purposes and should be used as a guide only. ^GST inclusive. Price is based on nominated home on nominated lot (Lot 66). Purchasers to confirm site costs and final inclusions with Trevelle Homes. Subject to Developer and Council approval, contour and borehole report. The content of this flyer was produced prior to completion of construction. Trevelle Homes reserves the right to revise the plans and specifications without notice or obligation. Prices correct as at 26/07/2011 and valid for 90 days.