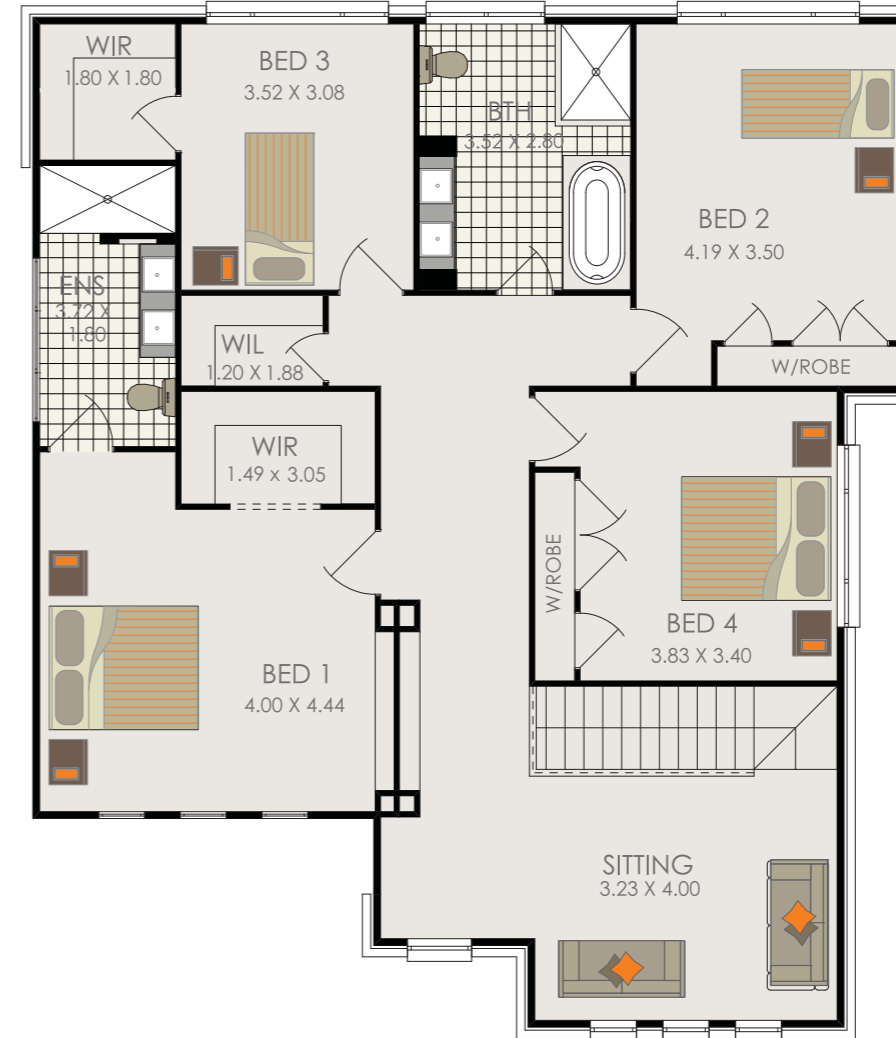


The Bomac 32



WELCOME TO TREVELLE HOMES

What sets Trevelle apart from other home builders is our understanding that a home is not just a mere passing shelter; its essence lies in the personalities of the people who live in it.

We strive to bring this essence into the homes we build by working closely with you, allowing you to bring your own personality into the home of your dreams. Our aim is to offer and combine our experience and expertise with your vision to guarantee the utmost satisfaction by dedicating quality, diversity and value in all the homes that we build.

Our Homes are designed to suit all budgets and tastes; whether you are seeking traditional, contemporary or modern styles, single storey or multi storeys or needing house and land packages, Trevelle Homes can accommodate.

© Copyright All rights reserved by Trevelle Homes.

TOTAL AREA
298.45sqm

OVERALL WIDTH
12.95m

LENGTH
13.66m

OPTIONAL ALFRESCO
18.72sqm



The Argent



The Waldorf



The Leighton